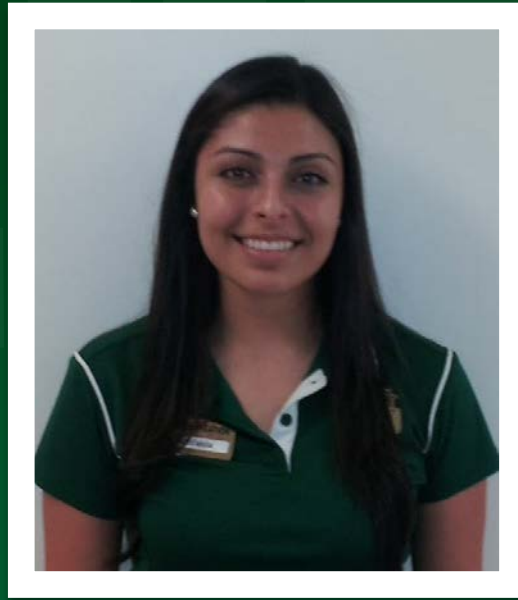


June Employee Of The Month



ESTEFANIA LUNA

RAC CSA



MAJOR: Integrative Studies (Conc. in Org and Admin)

WORKED AT MASON REC SINCE...: September 2013

FUN FACT: VP of Hispanic Student Association

FAVORITE SPORT: Track & Field

FUN FACT: Pit Bull & Miguel